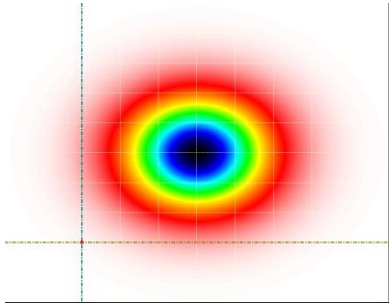
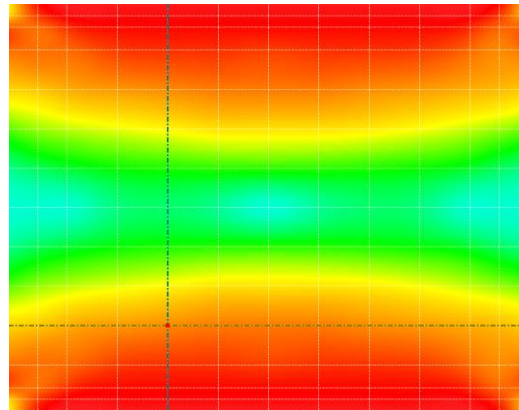


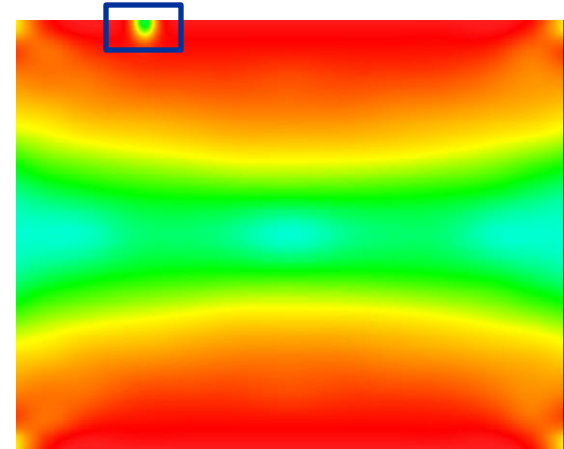
Special shape modify- Mask Image



open new file to design
special shape of density
profile



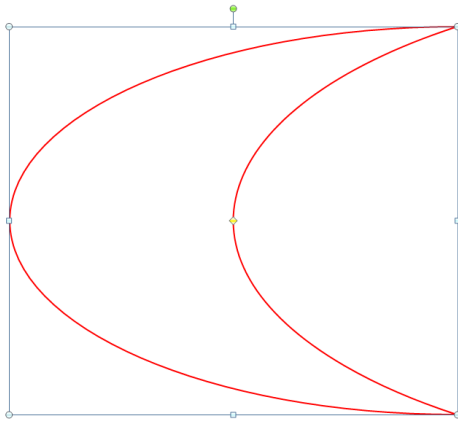
Combine with original design



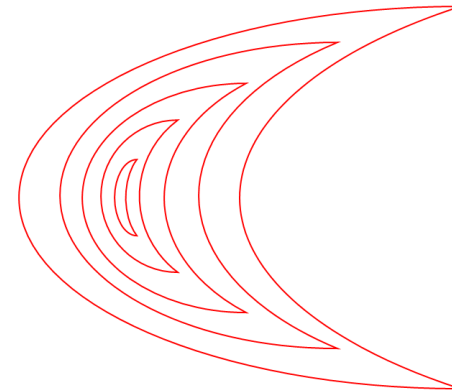
Finish



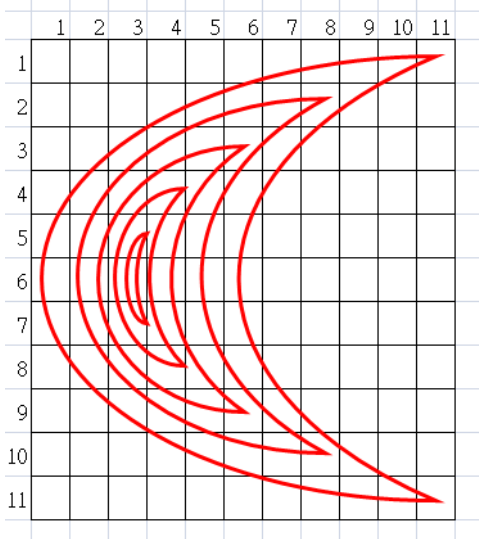
open new file to design special shape of density profile



1 Draw special shape by power point



2 Copy and shrink to 80%,60%,40%,20% then group

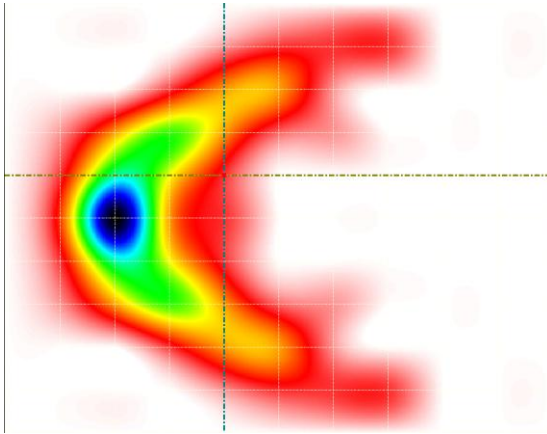


	1	2	3	4	5	6	7	8	9	10	11
1	0	0	0	0	0	0	0	0	0	0	0
2	0	0	0	0	0.1	0.2	0.2	0.2	0	0	0
3	0	0	0	0.2	0.4	0.4	0.1	0	0	0	0
4	0	0.1	0.4	0.5	0.4	0.2	0.1	0	0	0	0
5	0	0.2	0.7	0.5	0.2	0	0	0	0	0	0
6	0	0.3	1	0.4	0.2	0	0	0	0	0	0
7	0	0.2	0.7	0.5	0.2	0	0	0	0	0	0
8	0	0.1	0.4	0.5	0.4	0.2	0.1	0	0	0	0
9	0	0	0	0.2	0.4	0.4	0.1	0	0	0	0
10	0	0	0	0	0.1	0.2	0.2	0.2	0	0	0
11	0	0	0	0	0	0	0	0	0	0	0

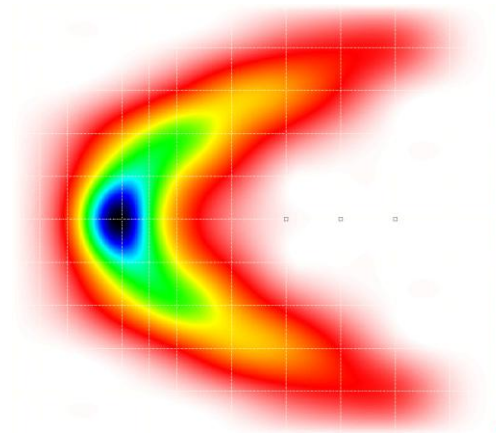
4 Fill density value

3 Paste in excel 11X11 array

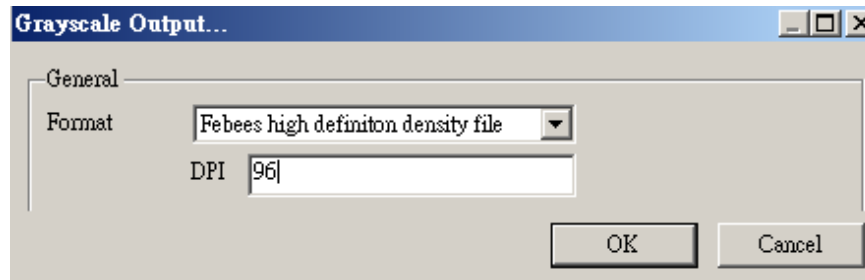
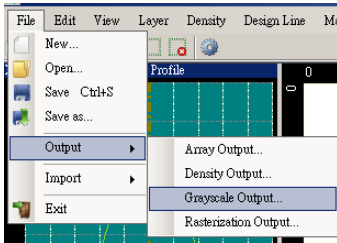
Modify shape by backlightFly



5 copy an paste into design

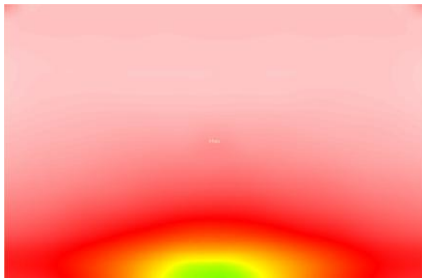
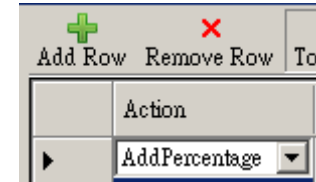
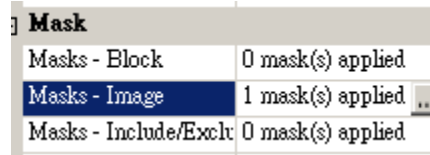
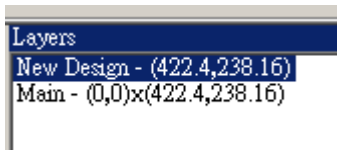


6 Use curve function to modify

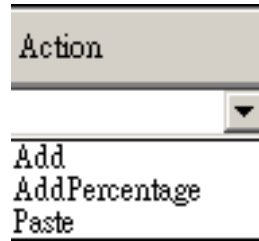


7 Export to Febees high definition density file

Combine with original design



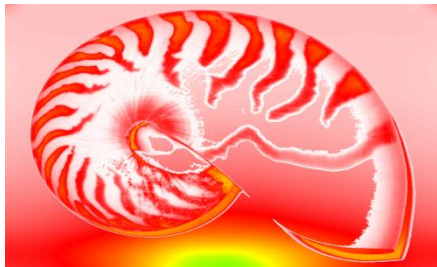
Design



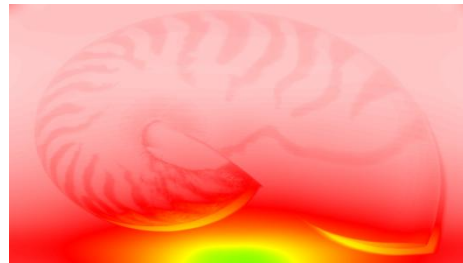
Action



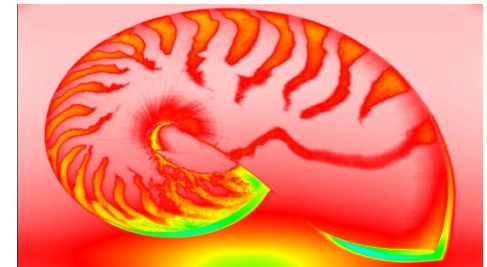
Image after $D_{new}=a*D+b$



Paste

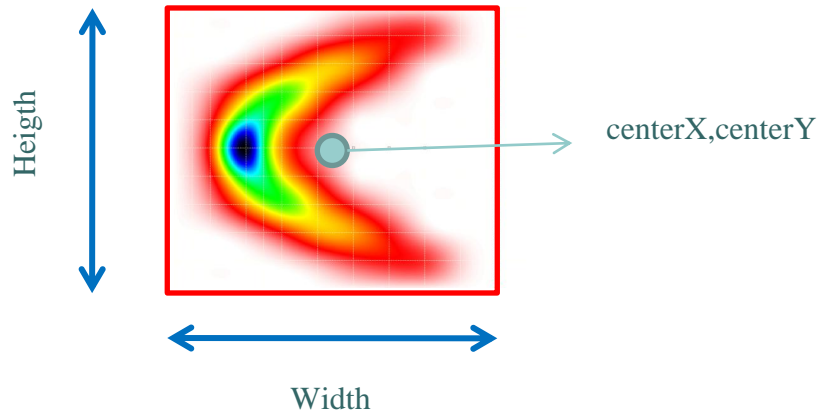


Add percentage



Add

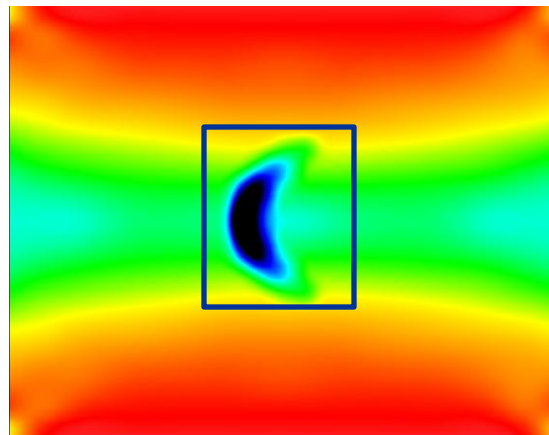
Combine with original design



$$D_{\text{new}} = \text{Multiplier} * D_{\text{origin}} + \text{Adder}$$

	Center X	Center Y	Width	Height
▶	113	68	67.37	90
*				

Multiplier	Adder
1	0



Finish !